

**Ranking Clusters**

Determine the order of clusters.

Work ← inscription ← Literal

**Ranking Objects**

Decide on the order of items within the cluster.

Work ← maker ← Bairei, Kono ← value ← name ← Literal



## Clustering Cultural Heritage Objects using Linked Data

dc:creator  
foaf:organization  
dc:type

Chris Dijkshoorn, Lora Aroyo, Guus Schreiber  
VU University Amsterdam  
Semantic Search System  
By linking collection data to entities in the Linked Data cloud, rich new sources of information and relations are added. We use these relations to find paths between objects, thereby creating clusters of search results.

dc:language  
foaf:project

Prolog, JavaScript (Twitter Bootstrap)  
SEALINC Media - The clusters help to support external experts in annotating objects of the Rijksmuseum.

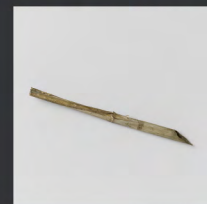
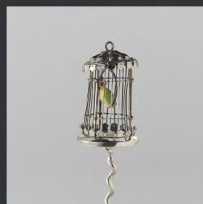
dc:source  
foaf:homepage  
dc:source

Rijksmuseum, ULAN, AAT, IconClass  
semanticweb.cs.vu.nl/clustersearch  
github.com/rasvaan/cluster\_search

**Naming Clusters**

Generate names understandable for users.

Work ← material ← feather (bird) ← value ← materialNotes ← Literal

**Cluster Abstraction**

Use different layers of abstraction to cluster objects.

Work ← exhibition ← Class: Exhibition ← exhibitionTitle ← Literal

**Cluster Abstraction**

Merge for example this cluster in the cluster above using class.

Work ← exhibition ← Vermeer and the Delft Style ← exhibitionTitle ← Literal

